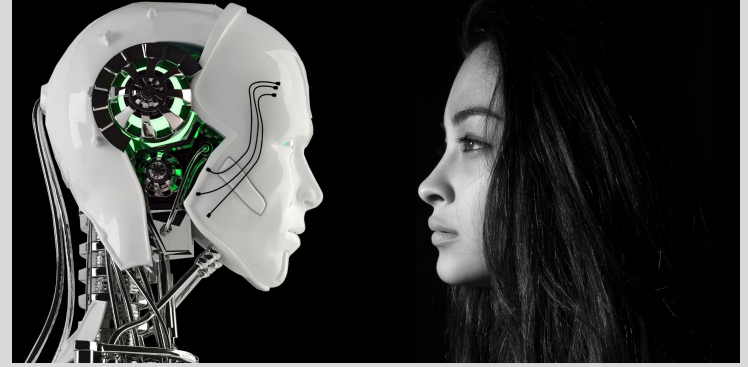


How has the COVID-19 pandemic affected working conditions for research software engineers?

Preprint DOI: 10.48420/14330807

Dataset DOI: 10.48420/14308478

- Impacts not equal
- Inclusivity has improved
- Productivity has gone up - but is it sustainable?
- Positive impact for open science and RSE
 - *'Epidemiology is having its "ClimateGate" moment.'*



<https://stride.org.uk>