

WELCOME TO THE COLLABORATIONS WORKSHOP!

Simon Hettrick



Software
Sustainability
Institute



Arts and
Humanities
Research Council

Biotechnology and
Biological Sciences
Research Council

Economic
and Social
Research Council

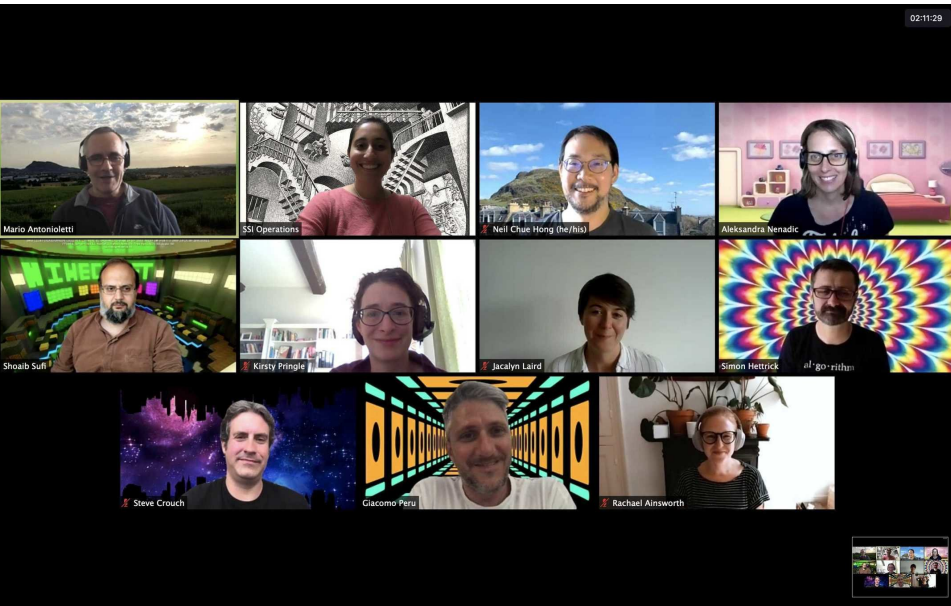
Engineering and
Physical Sciences
Research Council



Medical
Research
Council

Natural
Environment
Research Council

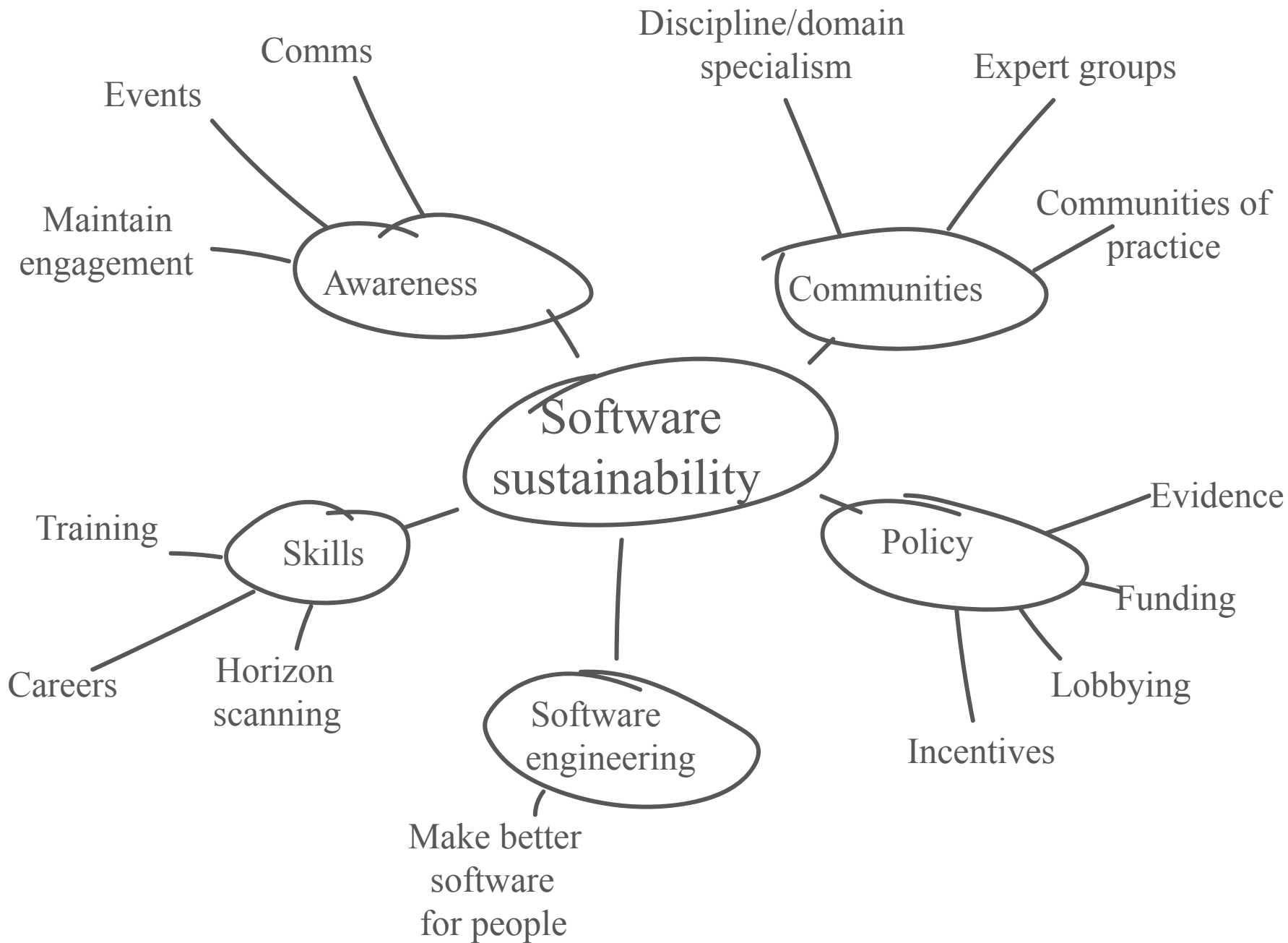
Science and
Technology
Facilities Council



THE SOFTWARE SUSTAINABILITY INSTITUTE

A national facility for cultivating better, more sustainable, research software to enable world-class research





”

Collaborate, don't compete.

– The Institute's golden rule

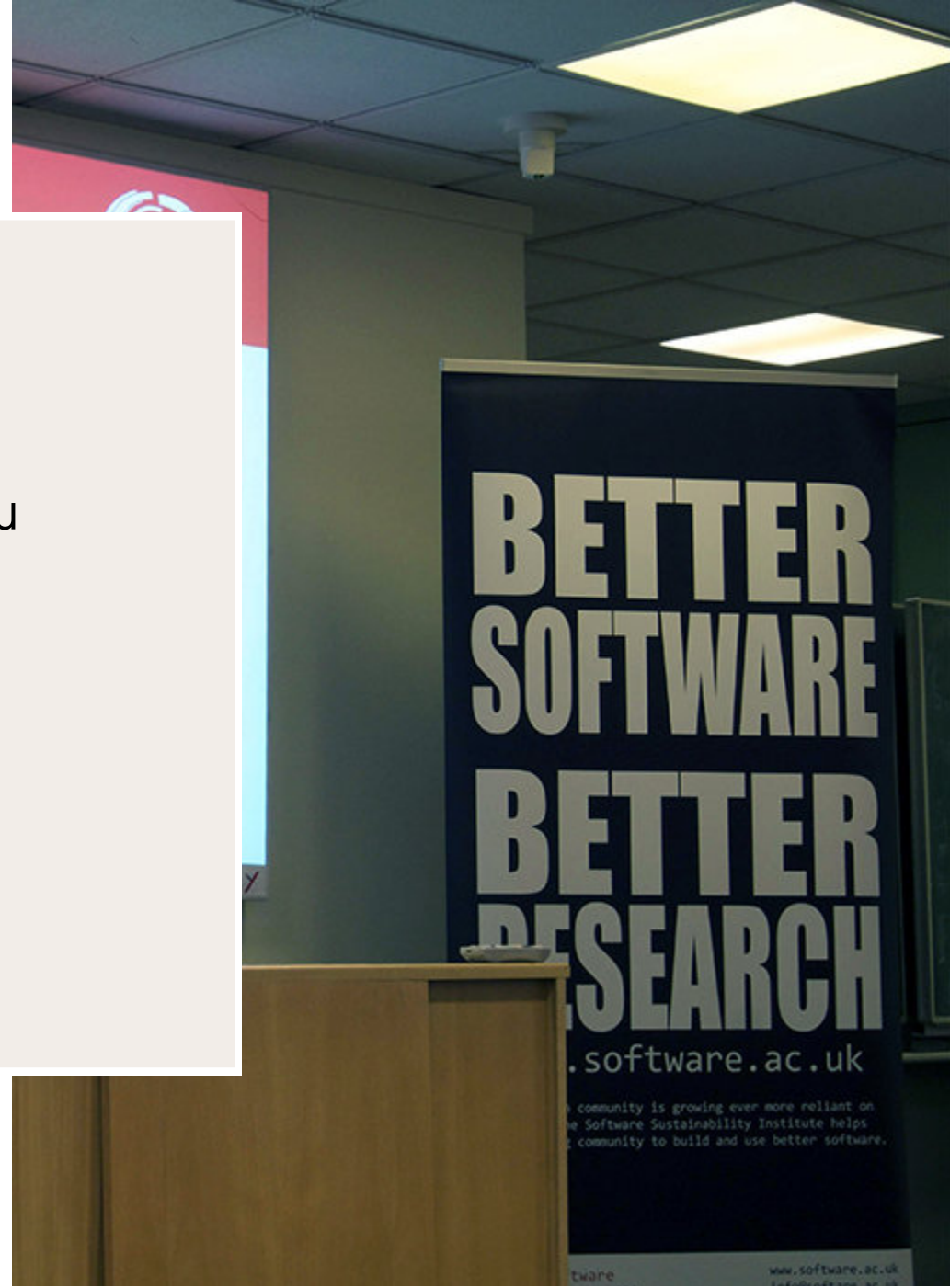


COLLABORATIONS WORKSHOP

- You're a participant, not an audience
- It's normal for someone you don't know to join the conversation
- If something doesn't work, help us fix it

SIMPLE RULES

- Find the session that fits you
- Follow our code of conduct
- Let us know about any non-inclusive behaviour
- Take breaks
- Have fun!





GREAT THINGS HAPPEN AT THE CW!

- The RSE community started here in 2012
- From a handful of people to a large, influential and supported community in only 10 years
- Be careful what you say, it could set the direction of your career...

WHAT NEXT?

- It's all about sharing ideas and building collaborations
- Meet new people, chat and plan
- No idea is too trivial; no idea is too aspirational
- Have fun!



THANK YOU!

@sjh5000 - ORCID: 0000-0002-6809-5195

Access these slides: <https://bit.ly/3NH75CT>

FUNDING

The Software Sustainability Institute is supported by the UK Research Councils through grants EP/H043160/1, EP/N006410/1 and EP/S021779/1, with additional project funding from Jisc. A collaboration between the universities of Edinburgh, Manchester, Oxford and Southampton.

LICENCE

© Simon Hettrick. These slides are licensed under a Creative Commons Attribution 4.0

International : <https://creativecommons.org/licenses/by/4.0>

